



West Loveland Avenue Traffic Study

April 30, 2024

BURGESS & NIPLE



Loveland Downtown District

TRAFFIC CONGESTION FACTORS:

- Popular Local Destination
- Limited River Crossings
- I-275 and I-71 Corridor Access through Loveland to Neighboring Communities
- 17,000 Vehicles are on the Bridge Daily

POTENTIAL SOLUTION:

- Construct an Additional Bridge Crossing over the Little Miami River

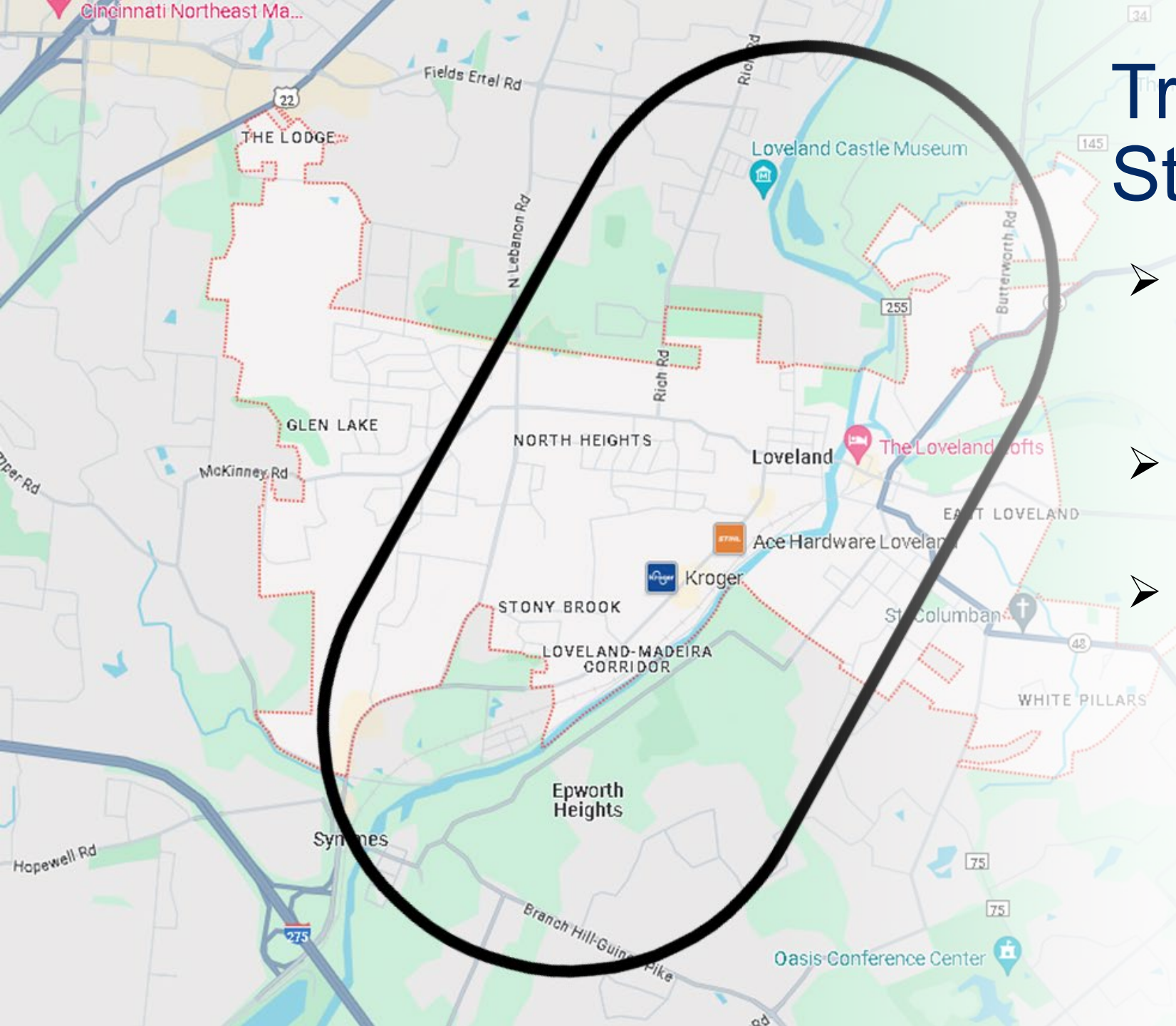
BURGESS & NIPLE



Purpose and Need Statement

The project aims to enhance mobility and access for all modes of traffic within the Historic Downtown area and to improve connectivity across the Little Miami River for through traffic.

BURGESS & NIPLE



Traffic Study Area

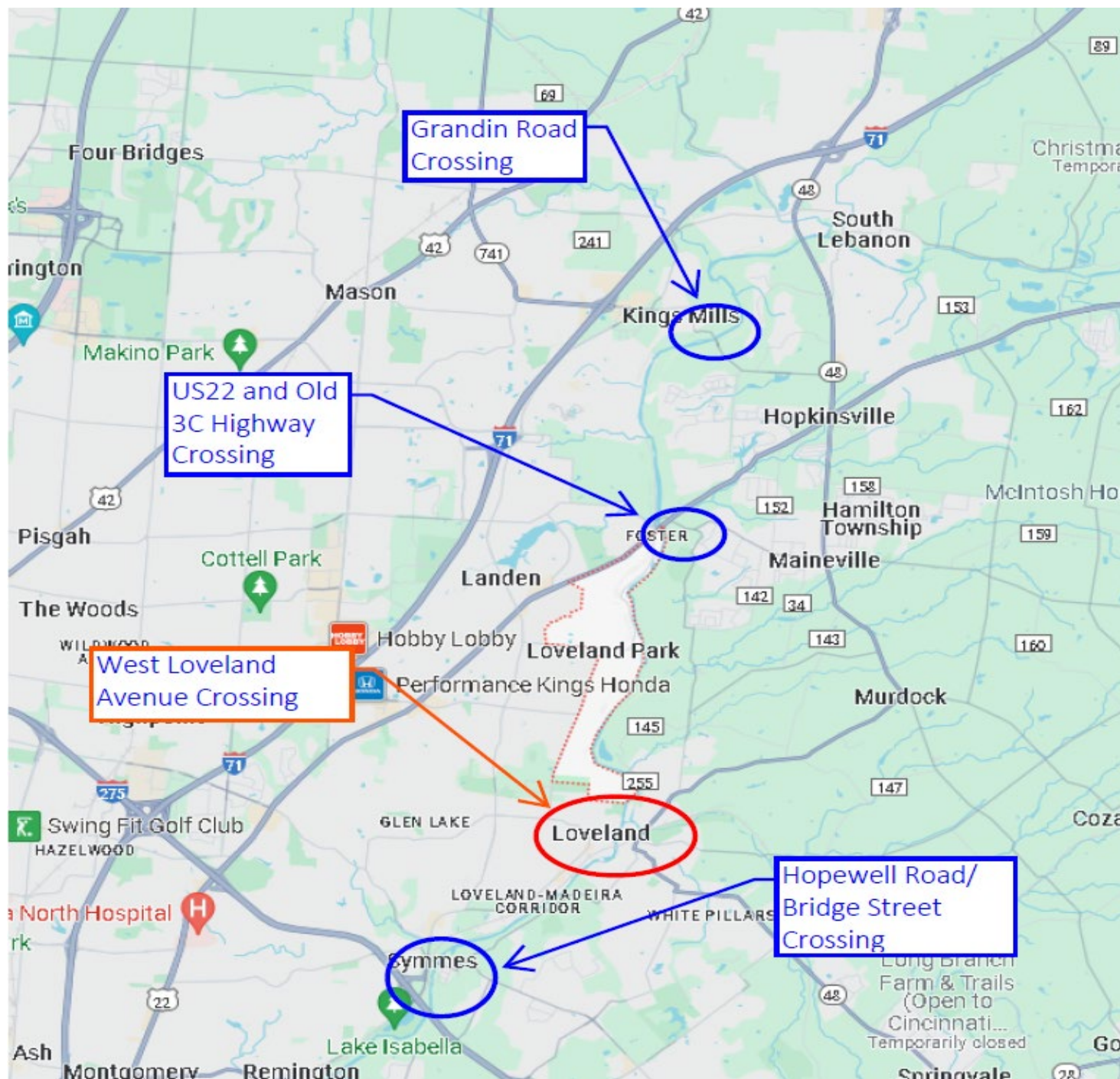


- Approx 1.0 +/- River Miles North and 2.5 River miles South of the Existing Bridge
- Design Alternatives Require Regional Solutions
- Existing Cross-river Connections
 - ✓ Hopewell Road (2.5 mi South)
 - ✓ US 22 (4 mi North)
 - ✓ Old 3C Highway (4 mi North)
 - ✓ Grandin Road (6.5 mi North)

BURGESS & NIPLE



Traffic Study Area



- Existing Cross-river Connections
 - ✓ Hopewell Road (2.5 mi South)
 - ✓ US 22 (4 mi North)
 - ✓ Old 3C Highway (4 mi North)
 - ✓ Grandin Road (6.5 mi North)

BURGESS & NIPLE

Residential Survey



SURVEY RESULTS:

- **1,769 Total Survey Responses**
- **1,707 Complete Survey Responses**
- **Complete results are available at:**
lovelandoh.gov

WEST LOVELAND AVENUE ISSUES:

- **Travel Delays**
- **Congestion On and Near the Bridge**
- **Parking**

CONTRIBUTING FACTORS IDENTIFIED:

- ✓ **Limited Connectivity**
- ✓ **Built-in Street Grid**
- ✓ **Finding Available Parking**
- ✓ **Little Miami Scenic Trail – High Volume Pedestrians and Cyclists**
- ✓ **Dining and Shopping**
- ✓ **Low-clearance Train Trestle over Karl Brown Way**

BURGESS & NIPLE

Government Partners Project Coordination



- Ohio Department of Transportation
- Ohio-Kentucky-Indiana MPO
- Warren County
- Clermont County
- Hamilton County
- Deerfield Township
- Symmes Township
- Miami Township
- Hamilton Township
- City of Loveland Police and Fire Departments

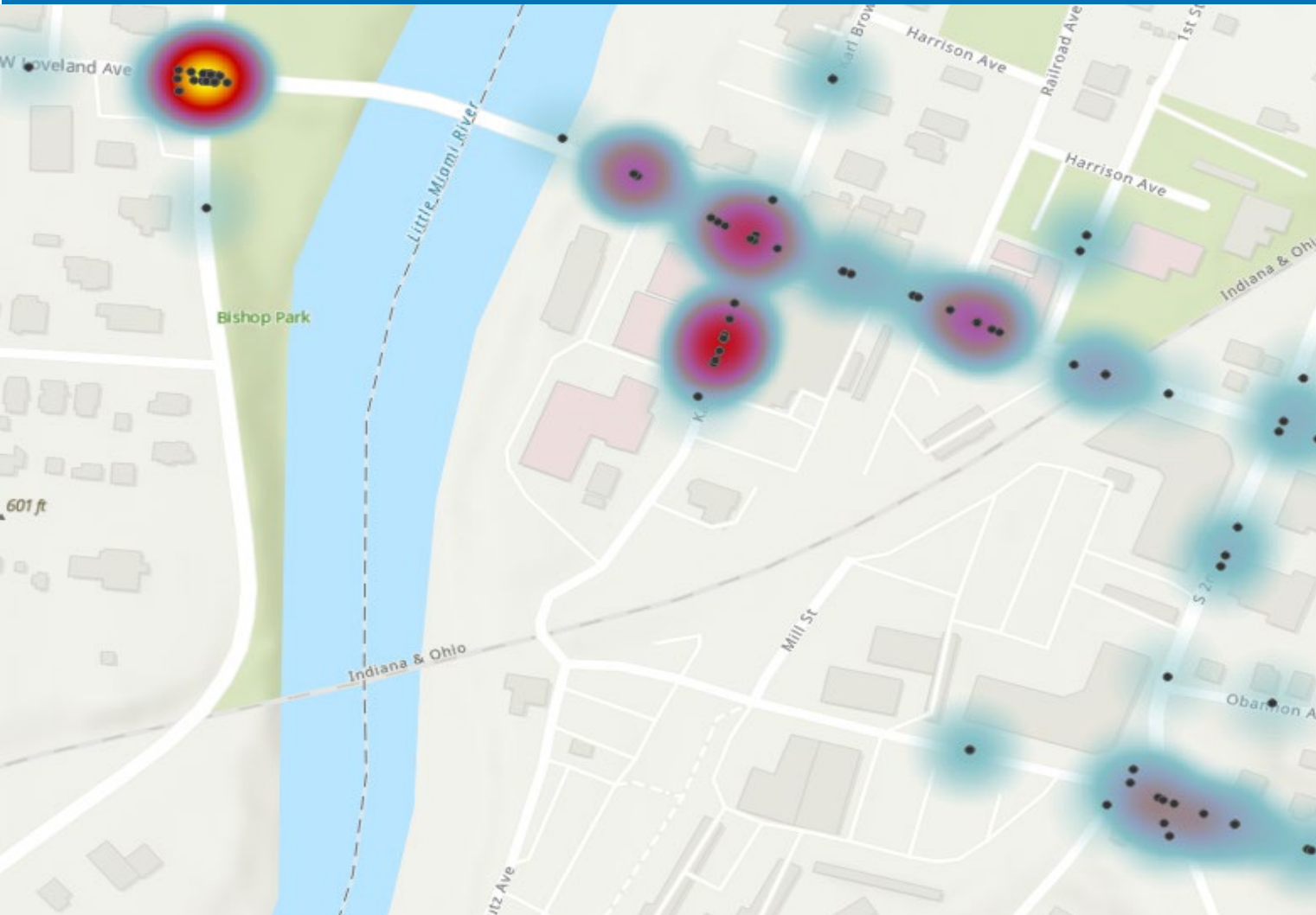
BURGESS & NIPLE

Alternative Review Factors



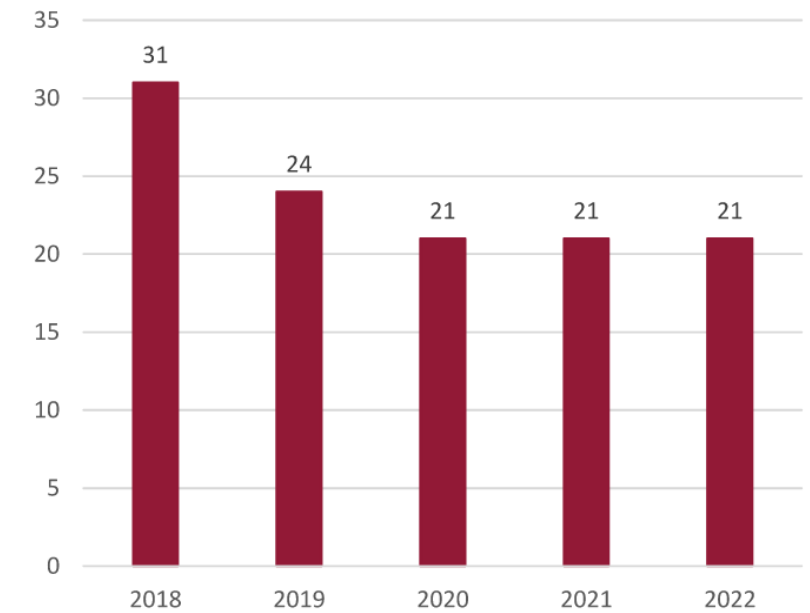
- Safety
- Traffic Origin/Destination
- Downtown Loveland Traffic Flow Improvements
- Road Network Connections
- Current Infrastructure and Development Improvements
- Constructability
- Right of Way
- Construction Cost
- Environmental Concerns

Existing Conditions - Safety



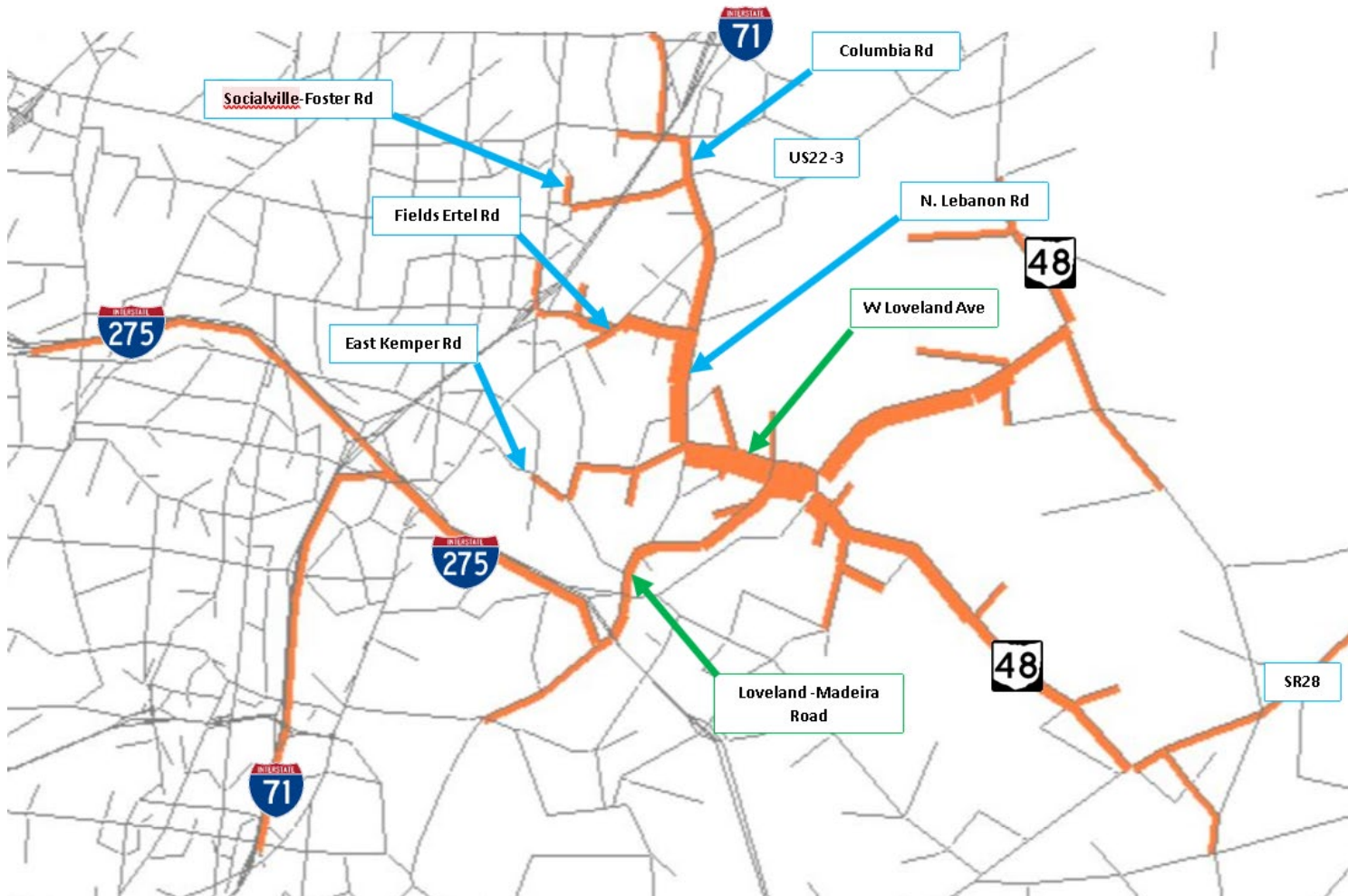
● Crashes
Sparse
Dense

All Crashes 2018-2022



BURGESS & NIPLE

Existing Traffic Conditions (OKI)– Traffic Origin/Designation



- Traffic Data from OKI
- Traffic Volumes represented by thickness of Orange line
- South Traffic Corridor
 - IR71/SR275/Loveland-Madeira Rd
- North Traffic Corridor
 - Columbia Rd/Fields Ertel Rd
- Northeast Traffic Corridor
 - SR48
- Southeast Traffic Corridor
 - SR48/SR28

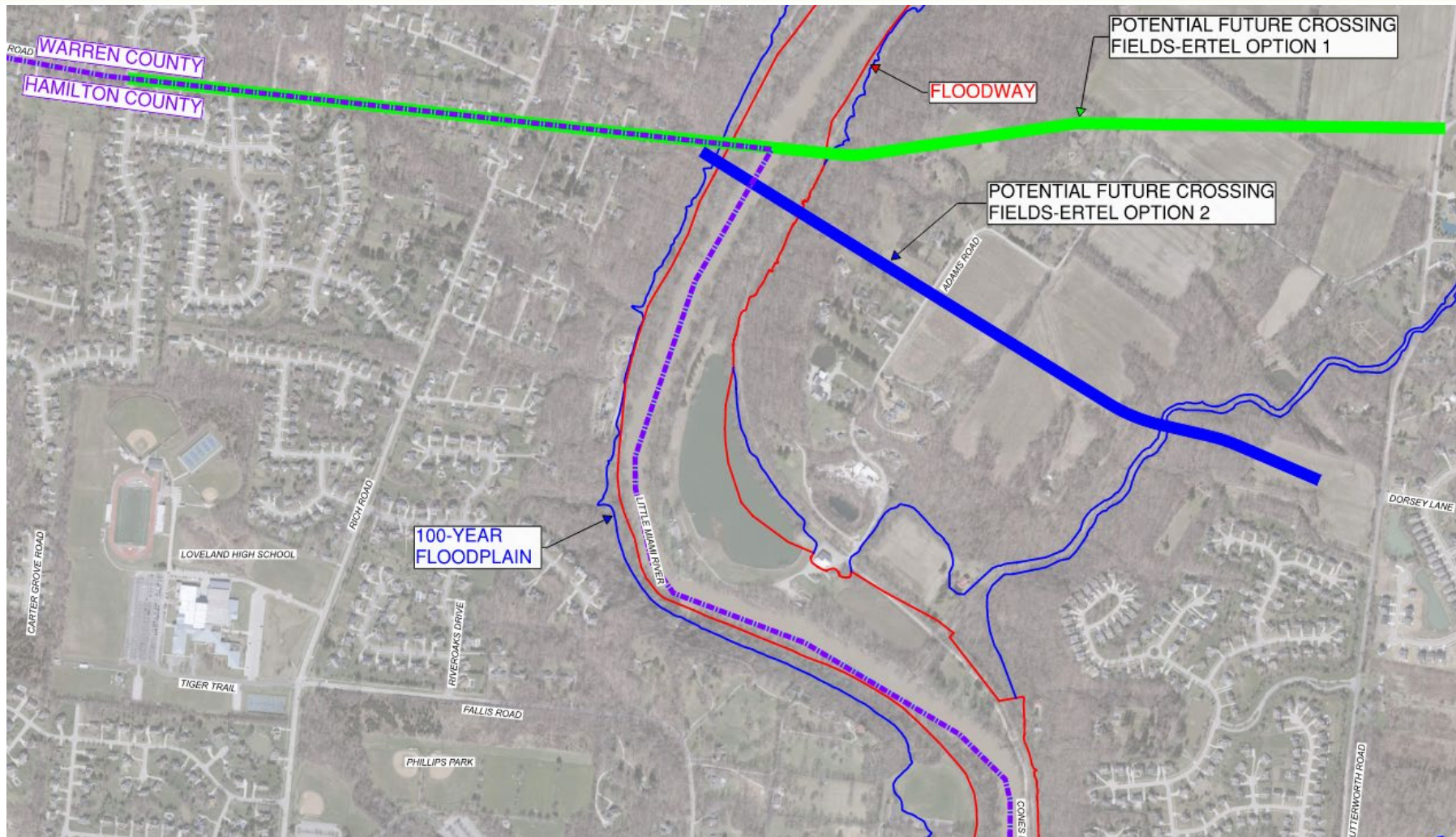


Planning Study Alternative Analysis

- Alternate No. 1 – No Build
- Alternate No. 2 – New River Crossing
 - No. 2A: North Bridge Crossing at Fields-Ertel Road
 - No. 2B: North Bridge Crossing at Fallis Road
- Alternate No. 3 – Widen Road
 - Improvements to Hanna Avenue and Branch Hill
 - Alternate Future Connection Location

Alternate 2A

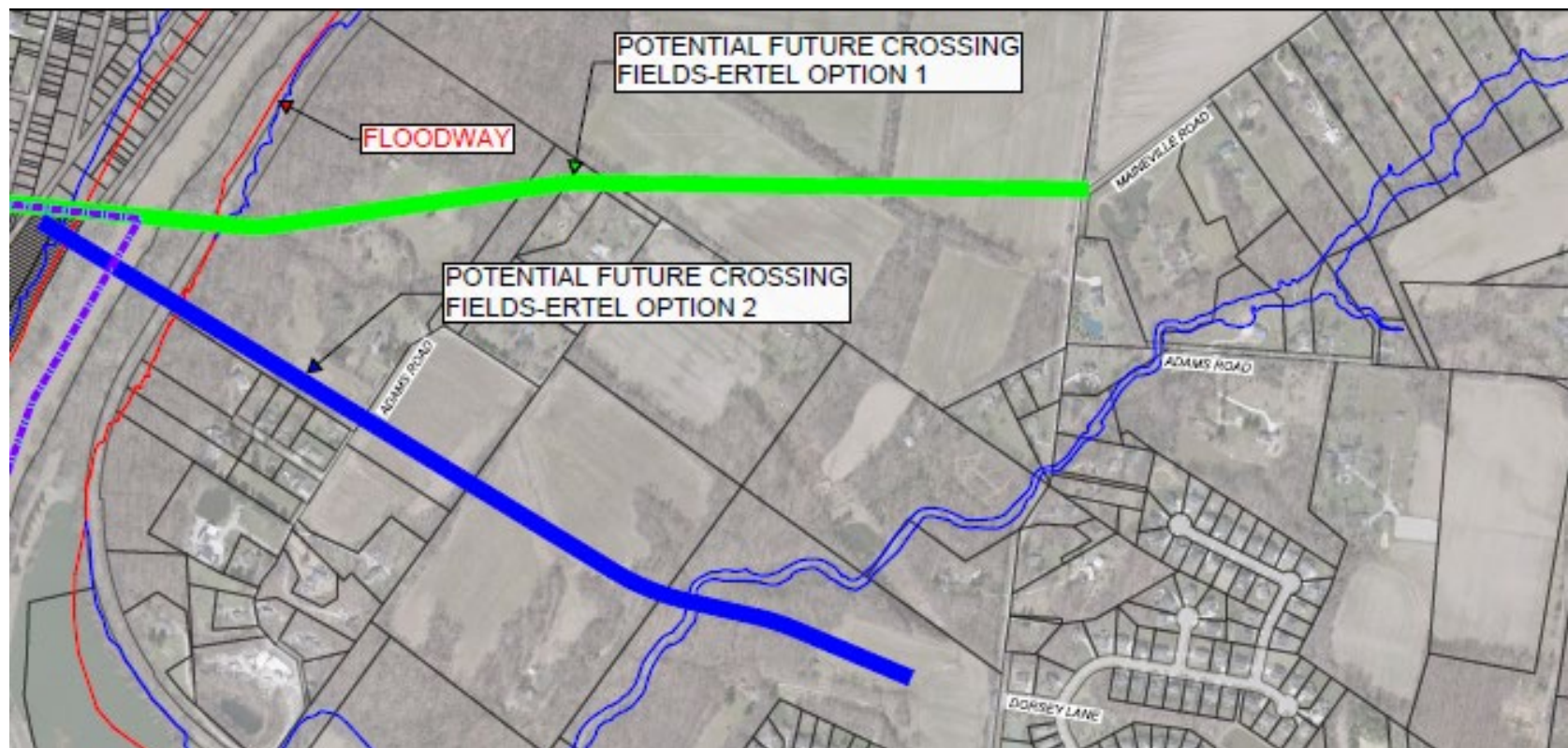
North Bridge Crossing at Fields-Ertel Road



BURGESS & NIPLE

Alternate 2A

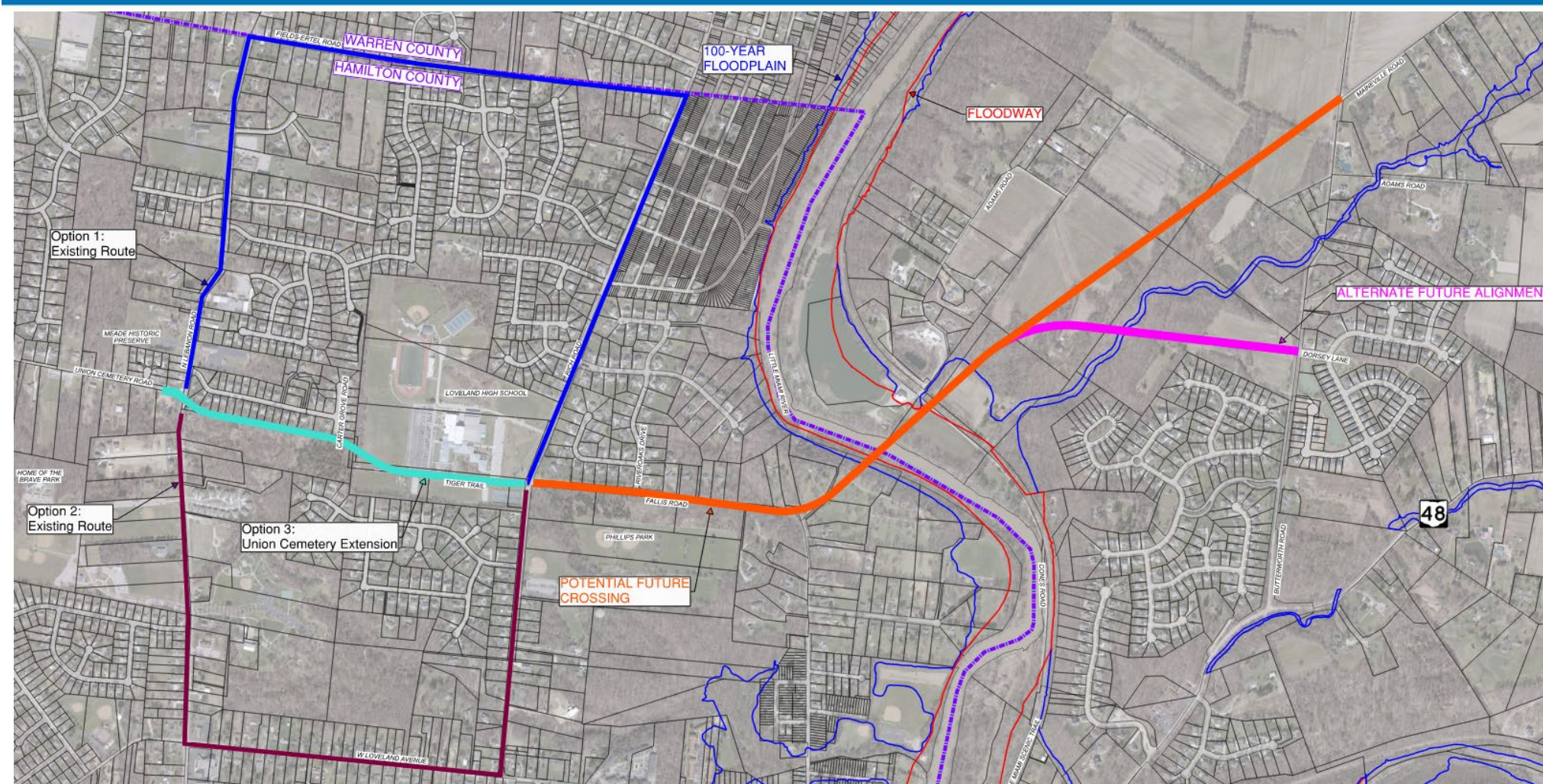
North Bridge Crossing at Fields-Ertel Road



BURGESS & NIPLE

Alternate 2B

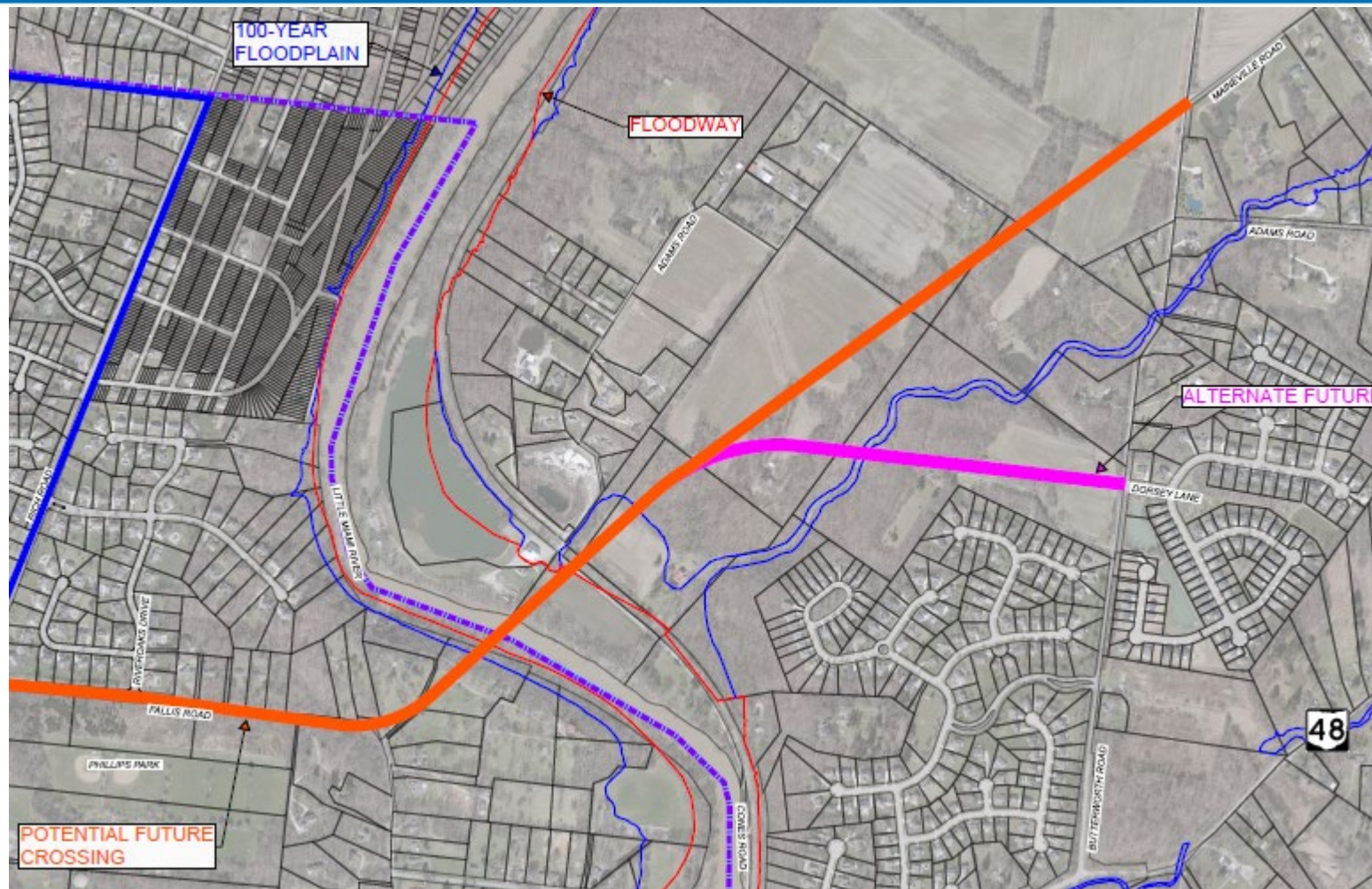
North Bridge Crossing at Fallis Road



BURGESS & NIPLE

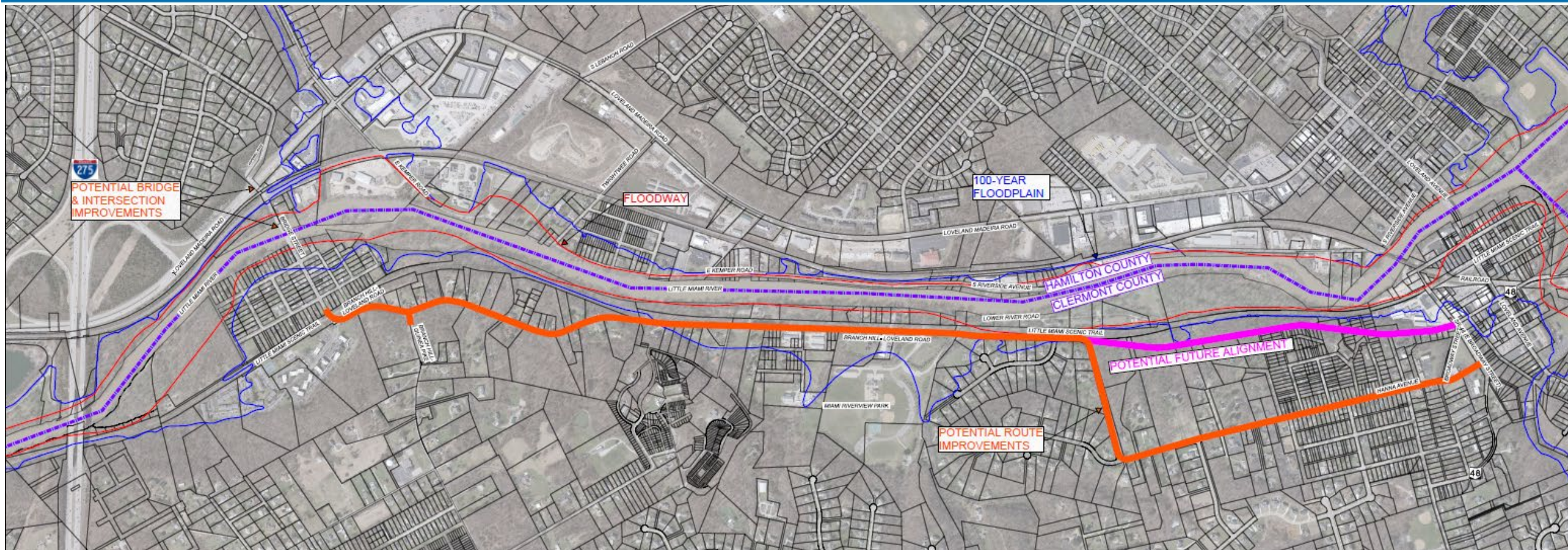
Alternate 2B

North Bridge Crossing at Fallis Road



BURGESS & NIPLE

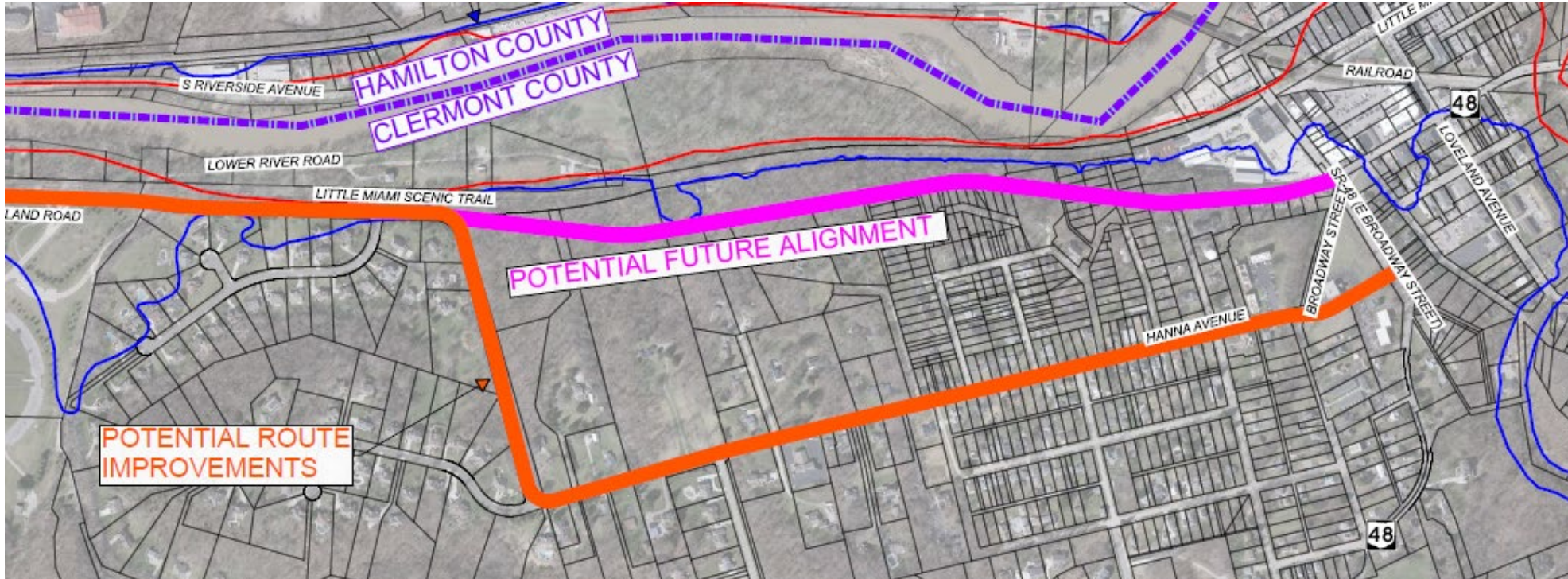
Alternate 3 Improvements to Hanna Ave & Branch Hill



BURGESS & NIPLE

Alternate 3

Improvements to Hanna Ave & Branch Hill





Corridor Improvements

COMMITTED PROJECTS:

- Bike Trail Pedestrian Bridge
- Harrison Avenue Improvements
- Railroad Avenue
- 1st Street Parking Lot

PROPOSED PROJECTS:

- Loveland-Madeira Road Improvements
- Riverside Drive/West Loveland Ave Intersection
- Riverside Drive Slide Repair
- Bike Trail Crossing Control at West Loveland Avenue

BURGESS & NIPLE





Next Steps

- Design Team Members Available at the Exhibits
- Comment Cards
- QR Code
- Comments will be taken for the next 30 days
- Video and PowerPoint presentations will be available through the City
- Planning Study Report will be completed in August 2024